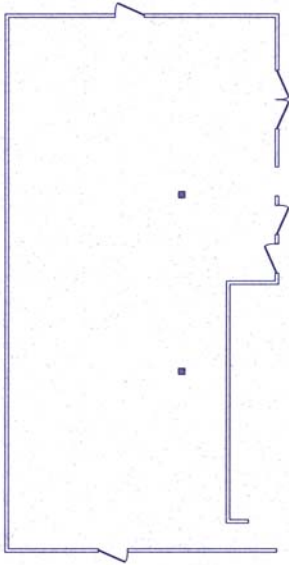


# MEETING & BANQUETS

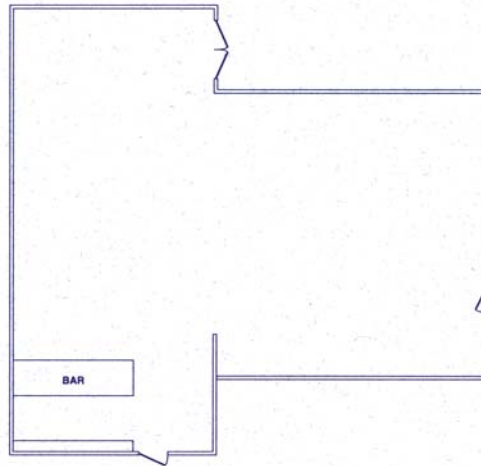
2,900 Square feet of meeting and banquet space.  
Pool side, under the trellis for receptions & barbecues.

## FLOOR PLANS

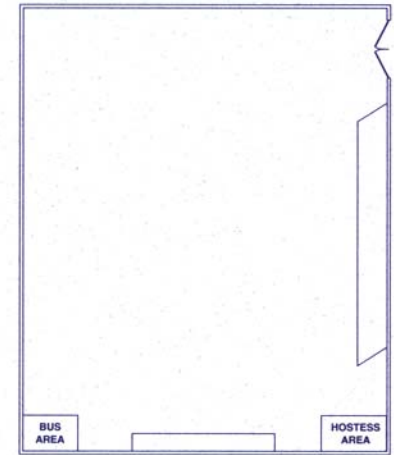
### Lord Jim's



### Preferred Guest Lounge



### Seven Seas Room



Sq. Ft. . . . . . 1155  
Classroom . . . . . 80  
Theater . . . . . 100  
Rounds . . . . . 100

Sq. Ft. . . . . . 882  
Classroom . . . . . 40  
Theater . . . . . 80  
Rounds . . . . . 60

Sq. Ft. . . . . . 900  
U-Shape . . . . . 30  
T-Shape . . . . . 20  
Open Seating . . . . . 45